

leafletFOLDER NET 21

for Integration into Packaging Lines /
as Stand-Alone Folding System



Folding Pharmaceutical Inserts Better, Automatically: User-friendly Operation / Reliable Reproducibility / High Productivity

GROUP

Increase the efficiency of your packaging system through computer-controlled folding of leaflets

The rationalization movement that we initiated several years ago with the introduction of computer control for folding machines has now also reached the packaging process: The new leafletFOLDER NET 21 makes the proven, superior technology of the MB Bäuerle folding systems also applicable for cartoning machines, as this leaflet folder has been specifically designed for integration into such systems. For the first time the highly complex setting process for small folds has been completely automated and simplified in such a way that this fold module can be set up with very little know-how and without physical effort.

Folding better, automatically

This leaflet folder is designed for use in cartoning and packaging machines. It is easy to access, set up and operate because the controls are on the operator side of the packaging machine. The user-friendly touch screen coupled with the automatic features of the folder make job set-up quick. Walking distances around the machine have become considerably shorter. Once a job is created it can be saved for recall. Recalled jobs set up very quickly. Automatic set-up and job recall are time-saving, increasing daily throughput and making short runs more feasible.

An electronic interface permits the external recall of programs.

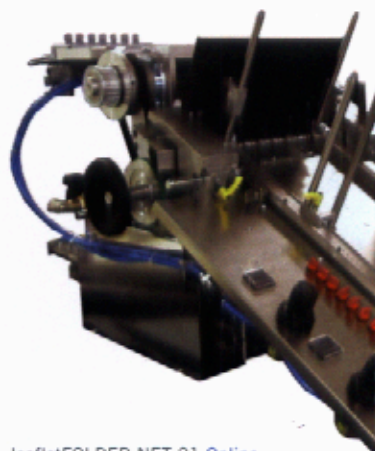
Optional equipment, such as a professional scoring device, a diverter after the fold unit as well as reading heads for code scanning on the top or bottom of the sheet supplement the versatility of the leafletFOLDER NET 21.

The leaflet folder therefore reduces waste, avoids common setting errors and increases the return on the investment.

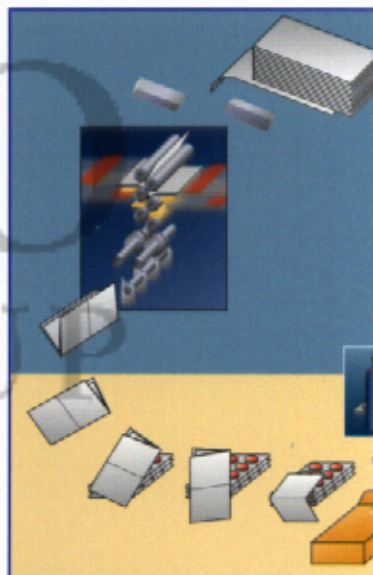
Unique operator convenience

There is no folder that can be set and operated more easily than the leafletFOLDER NET 21. The most important setting functions are made automatically at the touch of a button. Comparable to an autopilot, the computer control takes care of the following jobs:

- No measuring of fold lengths.
- No calculating of stop positions.
- No need to remove fold plates and replace them by deflectors.
- No special know-how required for correct setting of fold roller gaps.



leafletFOLDER NET 21 Online
Table length 600 mm



Fold and packaging process

Automatic scoring

Automatic setting of scoring depth results in a deformation of paper in an angle of 90° to the fold. This facilitates reliable consistent transport of pharmaceutical inserts and blisters into the folded box.

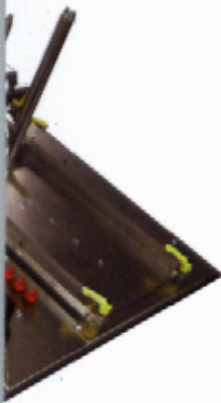
Simple handling

Thanks to automatic fold plates, it is no longer necessary to install deflectors. At the push of a button, the integrated deflectors move to the correct position. The uninterrupted deflector surfaces make for smooth paper travel, eliminate nicks and marks on any paper.

Network-capable:

With the optional Ethernet interface using TCTP/IP protocol, jobs can be set up and recalled from remote work





leafletFOLDER NET 21 Online
Table length 320 mm

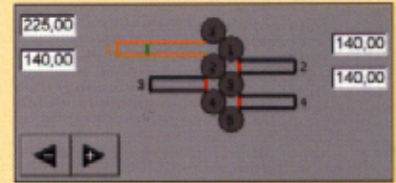


leafletFOLDER NET 21 Offline

THE TOUCH SCREEN DISPLAY IS THE CENTRAL CONTROL UNIT OF THE FOLDER

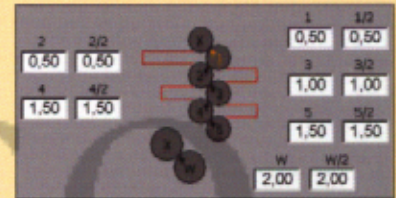


It is here where all the important settings are made. The touch screen display guides you through the set-up procedure. By pushing a button it is possible to choose between different languages and measuring systems.



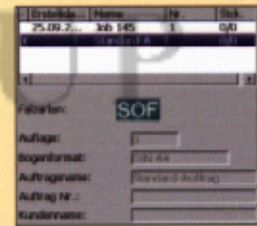
Automated setting of fold lengths

16 folds are pre-programmed. All other folds are freely programmable. The stops automatically move to their calculated positions after selecting the fold. If corrections are still necessary, they can be made in small steps by pushing a button while the machine is running.



Unique positioning of fold rollers

This key procedure for accurate folding has now also been automated: From the measured paper thickness and type of fold the roller gap is calculated and set with high precision.



Saving and recall

200 individual fold jobs can be memorized. This number is sufficient for saving all folds for the most common carton sizes and shapes. Repetitive jobs are accurately reproduced by simply pushing a button.

High throughput in non-stop operation

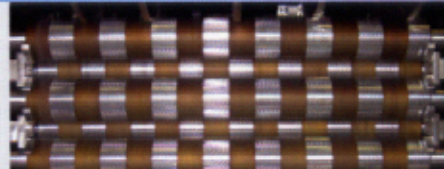
The feeder can be replenished from the top to ensure uninterrupted machine operation. The well-trying feeding system permits sheet separation from the bottom of the paper stack with equal reliability both for unfolded sheets as well as pre-folded products.

Sturdy design

Solid side plates make the fold unit stable and quiet. This sturdy design permits troublefree operation even in heavy-duty production environments. The polyurethane-steel fold rollers produce the sharpest folds possible.

Low-noise and low-maintenance

The almost maintenance-free flat drive belts on both sides of the fold unit provide quiet operation and high folding accuracy. As a result, full use can be made of the capability of the leaflet folder.



leafletFOLDER NET 21

Specifications:

Original paper sizes:
unfolded or pre-folded

Standard version (width x length):

max. 216 x 320 mm
(max. 8.5" x 12.5")

min. 75 mm x 85 mm
(min. 2.95" x 3.35")

Special version (width x length):

max. 216 x 600 mm
(max. 8.5" x 23.62")

min. 75 x 85 mm
(min. 2.95" x 3.35")

Final paper sizes:

max. 216 x 37.5 mm
(max. 8.5" x 1.48")

min. 75 x 15 mm
(min. 2.95" x .59")

Fold length:

Standard version:

max.

min.

Fold plate I: 225 mm (8.86")

15 mm (.59")

Fold plates II, III, IV: 140 mm (5.51")

15 mm (.59")

Special version:

Fold plate I: 305 mm (12")

15 mm (.59")

Fold plate II: 225 mm (8.86")

15 mm (.59")

Fold plate III, IV: 140 mm (5.51")

15 mm (.59")

Paper weight:

40 to 180 GSM (11 to 48 lb. bond)

Speed:

max. 500 cycles/min; 240 m/min (788 ft/min) (depending on paper size)

Number of fold plates:

4

Feeder capacity:

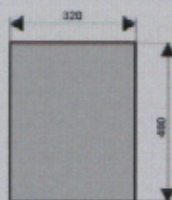
max. 2,500 sheets (A4; 50 GSM / 13 lb. bond)

Optional equipment:

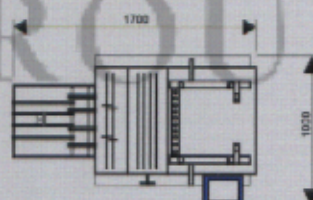
Reading heads for code scanning on the top or bottom of the sheet
Professional scoring device + automatic setting of scoring depth
Diverter after fold unit

Floor space:

Online version



Offline version



Technical improvements may be introduced without previous notice.



Folding better, automatically

Distributed in the USA by:

GBR

SYSTEMS CORPORATION

Paper Handling, Processing & Finishing Equipment

8 Winter Avenue
Deep River, CT 06417
Phone: 800-833-6167
E-Mail: sales@gbr.com

Fax: 860-526-2747
Website: <http://www.gbr.com>